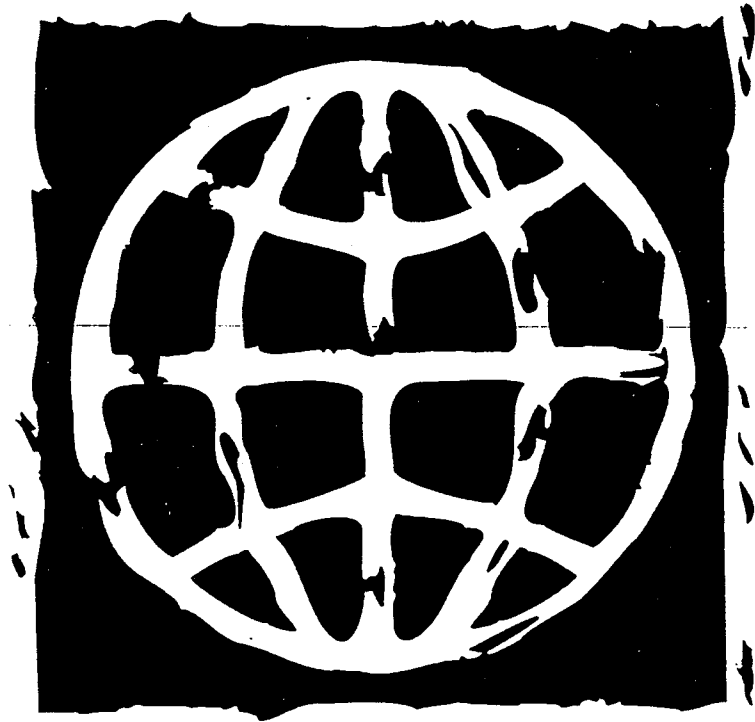


ANNUAL REPORT 2000

JEFFERSON COUNTY BOARD OF



ELECTIONS

TABLE OF CONTENTS

INTRODUCTION

OBJECTIVES AND PERFORMANCE
DEPARTMENTAL DESCRIPTION
TYPES OF SERVICES AND ASSISTANCE
ORGANIZATION CHART

VOTER REGISTRATION

ORIGIN OF VOTER REGISTRATION FOR 2000
VOTER ENROLLMENT
VOTER REGISTRATION
VOTER TURNOUT

THE YEAR IN REVIEW

ANNUAL STATISTICAL INFORMATION

INTRODUCTION

The Jefferson County Board of Elections conducts all national, state, county, town, and some village elections. Although the Board of Elections is a County Agency, its structure, responsibilities and duties are mandated by New York State Election Law, while its administrative procedures, directions, guidelines, rules and regulations are defined by the New York State Board of Elections.

Objectives and Performance

To provide for the registration of voters within Jefferson County, and the conduct of elections as required by federal and state law. The Board of Elections' performance is fully mandated by federal and state law.

Departmental Description

The Board has a full-time staff of four employees with equal representation by Democrats and Republicans as mandated by New York State Election Law. The Board is administered by two part-time Commissioners who serve a two-year term. The Commissioners are elected by the County Committee of each political party and their appointment is confirmed by the County Board of Legislators. The Commissioners each have a Deputy who works full-time in the board office and runs the day-to-day operations of the office. The Deputy Commissioners are assisted by two full-time registration clerks and two part-time employees who work approximately three to five months of the year.

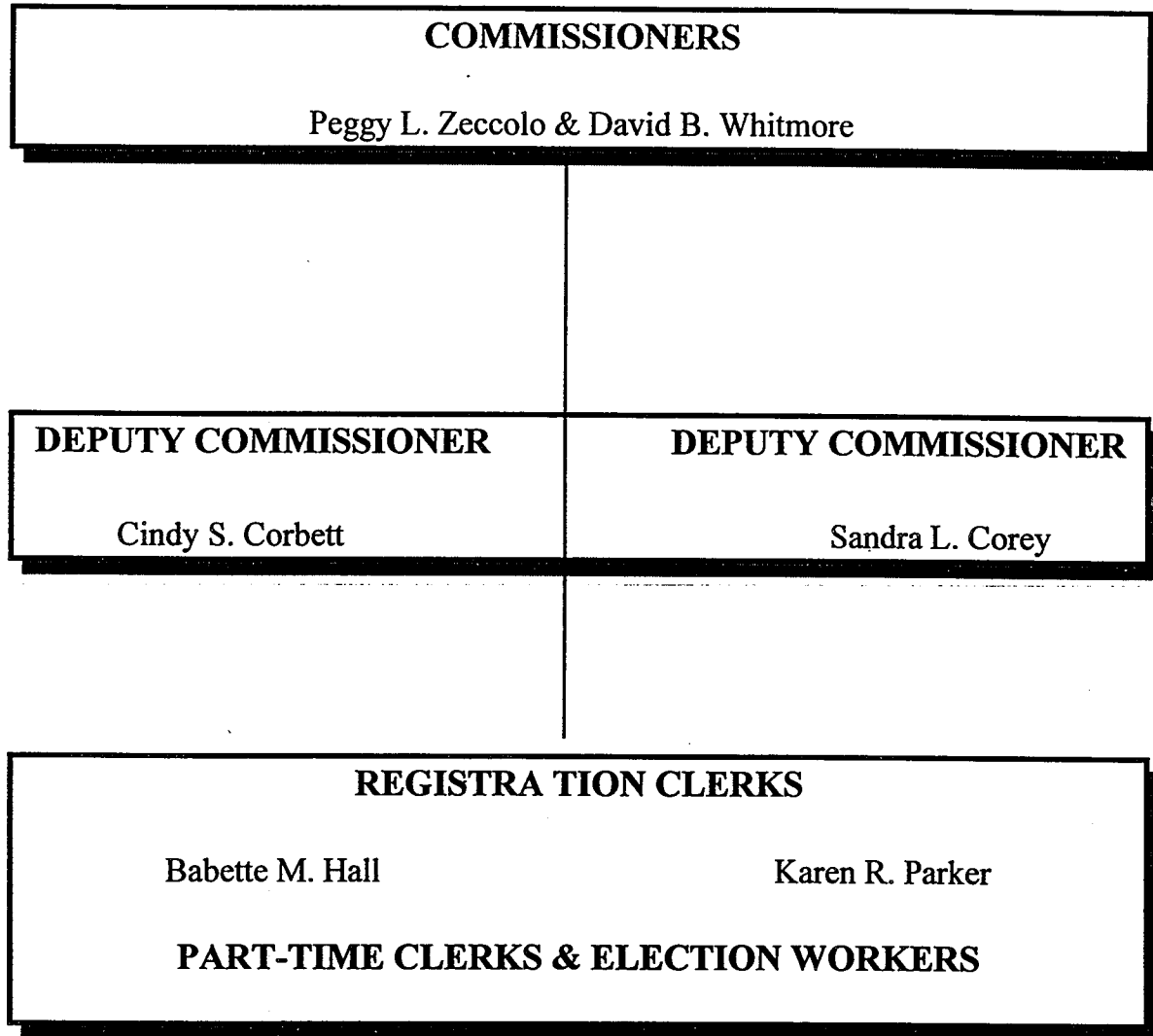
The staff of the county Board of Elections provides the technical, clerical and mechanical skills necessary to provide services, information and statistical data to county legislators, other departments, government agencies and the public. The Board of Elections is located in the Jefferson County Office Building, 175 Arsenal St., Fourth Floor Watertown, NY. The office is disabled accessible and open daily, 9:00 A.M. to 5:00 P.M., to serve the public.

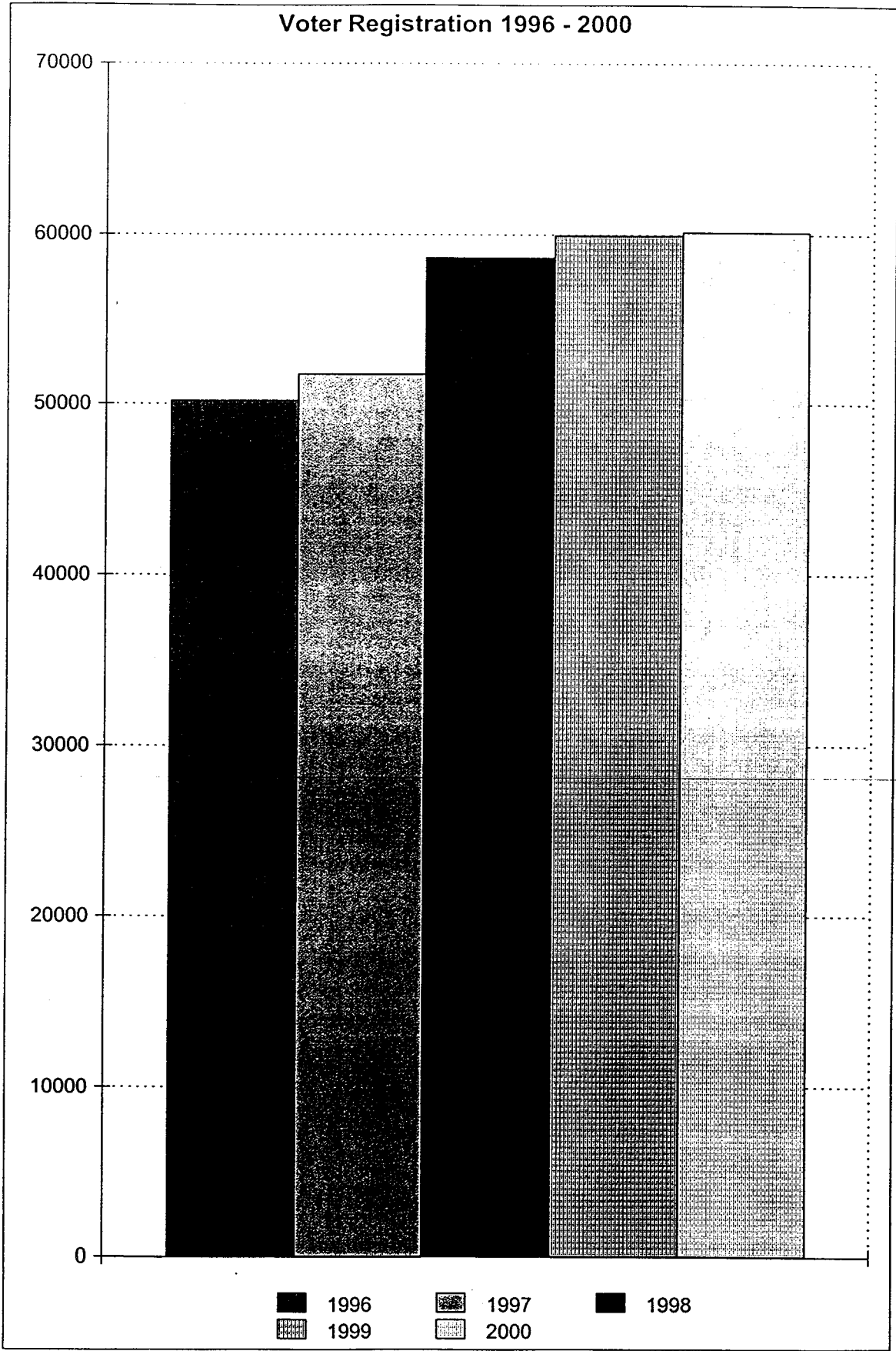
Types of Services and Assistance

- TO PROVIDE VOTER REGISTRATION FORMS AND ASSISTANCE TO THOSE PERSONS WISHING TO REGISTER
- TO PROVIDE TRAINING OF ELECTION INSPECTORS IN PROCEDURES USED IN ELECTIONS
- TO PROVIDE TRAINING OF MACHINE CUSTODIANS IN PROCEDURES OF THE SET UP AND REPAIR OF VOTING MACHINES
- TO PROVIDE ASSISTANCE TO TOWN AND VILLAGE CLERKS, SCHOOL DISTRICTS AND FIRE DISTRICTS RELATIVE TO THEIR ELECTIONS
- TO PROVIDE A DIRECTORY OF ELECTED OFFICIALS IN JEFFERSON COUNTY
- TO PROVIDE EDUCATIONAL BACKGROUND ON THE PROCEDURES OF REGISTERING TO VOTE AND VOTING TO SCHOOLS AND ORGANIZATIONS
- TO PROVIDE LISTS OF REGISTERED VOTERS AND STATISTICAL DATA ON REGISTRATION, ENROLLMENT AND VOTING
- TO ASSIST OTHER COUNTY AND STATE DEPARTMENTS
- TO PROVIDE ASSISTANCE TO CANDIDATES AND POTENTIAL CANDIDATES
- TO AID POLITICAL PARTIES WITH PROCEDURES OF THE ELECTION LAW

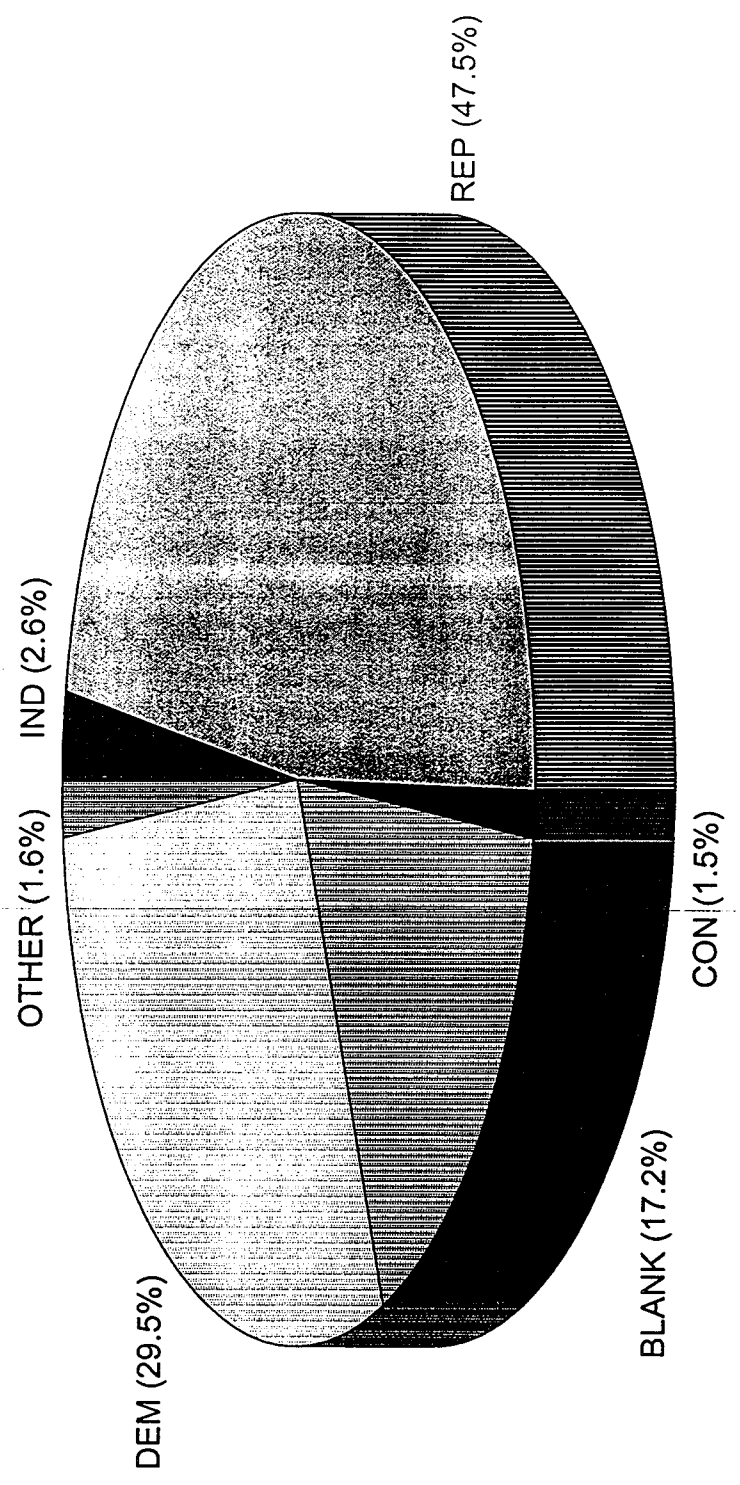
Organizational Chart

JEFFERSON COUNTY BOARD OF ELECTIONS





ENROLLMENT 2000



Jefferson County Board Of Elections
Voter Demographics (Age/Sex) by County Wide
Voter Status of A - Active

Party	Sex	0 - 18	19	20	21	22 - 24	25 - 34	35 - 44	45 - 54	55 - 64	65 - 74	75 - over	No DOB	Totals
Republican	Women	79	132	110	138	385	1,721	2,447	2,211	1,533	1,205	1,409	1,124	12,494
	Men	104	119	152	138	489	1,939	2,618	2,362	1,630	1,158	893	890	12,492
	Total	183	251	262	276	874	3,660	5,065	4,573	3,163	2,363	2,302	2,014	24,986
Democrat	Women	80	90	104	152	383	1,354	1,750	1,738	962	752	897	731	8,993
	Men	57	91	88	87	261	955	1,256	1,436	770	569	454	473	6,497
	Total	137	181	192	239	644	2,309	3,006	3,174	1,732	1,321	1,351	1,204	15,490
Independence Party	Women	7	34	29	36	77	186	200	98	42	19	14	3	745
	Men	23	24	20	25	74	205	195	128	45	24	14	0	777
	Total	30	58	49	61	151	391	395	226	87	43	28	3	1,522
Conservative	Women	2	6	3	4	12	63	92	83	37	16	7	7	332
	Men	4	2	2	4	30	78	119	105	48	33	13	15	453
	Total	6	8	5	8	42	141	211	188	85	49	20	22	785
Liberal	Women	5	8	6	9	36	69	81	62	14	9	4	5	308
	Men	0	3	6	4	20	48	41	60	22	6	7	10	227
	Total	5	11	12	13	56	117	122	122	36	15	11	15	535
Right to Life	Women	1	3	5	7	14	40	29	28	12	12	4	0	155
	Men	1	0	2	3	4	16	25	13	9	4	2	0	79
	Total	2	3	7	10	18	56	54	41	21	16	6	0	234
Green	Women	3	3	2	2	2	5	3	3	2	0	0	0	25
	Men	4	6	3	2	4	5	3	8	1	0	0	0	36
	Total	7	9	5	4	6	10	6	11	3	0	0	0	61
Working Families	Women	1	1	1	0	6	7	7	3	0	0	0	0	26
	Men	0	1	0	2	0	5	8	3	1	0	0	0	20
	Total	1	2	1	2	6	12	15	6	1	0	0	0	46
No Party	Women	124	143	68	72	159	338	228	106	62	28	20	2	1,350
	Men	81	137	65	49	137	300	194	107	58	22	12	2	1,164
	Total	205	280	133	121	296	638	422	213	120	50	32	4	2,514
Blank	Women	11	10	91	107	319	791	819	662	299	149	149	38	3,445
	Men	15	11	69	86	304	671	769	746	319	163	95	53	3,301
	Total	26	21	160	193	623	1,462	1,588	1,408	618	312	244	91	6,746

REP DE IND CON LIB Other Non Aff Enrolled Registered

Report Criteria: Voter Status of A - Active
 Election GE00

County Legislative District #001

Voters	2,030	46%	1,357	31%	86	1%	68	1%	30	0%	27	0%	770	17%	3,598	4,368
Voted	1,629	48%	1,070	31%	58	1%	48	1%	19	0%	15	0%	517	15%	2,839	3,356
Turnout	80%		78%		67%		70%		63%		55%		67%		78%	76%

County Legislative District #002

Voters	2,430	50%	1,376	28%	119	2%	75	1%	47	0%	26	0%	783	16%	4,073	4,856
Voted	1,881	53%	1,014	29%	72	2%	57	1%	25	0%	20	0%	420	12%	3,069	3,489
Turnout	77%		73%		60%		76%		53%		76%		53%		75%	71%

County Legislative District #003

Voters	2,204	49%	1,230	27%	125	2%	47	1%	39	0%	31	0%	752	16%	3,676	4,428
Voted	1,659	54%	866	28%	66	2%	22	0%	19	0%	21	0%	397	13%	2,653	3,050
Turnout	75%		70%		52%		46%		48%		67%		52%		72%	68%

County Legislative District #004

Voters	1,535	47%	850	26%	101	3%	52	1%	56	1%	15	0%	641	19%	2,609	3,250
Voted	1,101	51%	583	27%	46	2%	32	1%	36	1%	10	0%	314	14%	1,808	2,122
Turnout	71%		68%		45%		61%		64%		66%		48%		69%	65%

County Legislative District #005

Voters	1,089	47%	597	25%	70	3%	29	1%	14	0%	8	0%	503	21%	1,807	2,310
Voted	849	53%	409	25%	39	2%	22	1%	6	0%	5	0%	259	16%	1,330	1,589
Turnout	77%		68%		55%		75%		42%		62%		51%		73%	68%

County Legislative District #006

Voters	1,136	40%	1,057	37%	83	2%	43	1%	35	1%	24	0%	460	16%	2,378	2,838
Voted	806	43%	744	40%	44	2%	27	1%	17	0%	20	1%	194	10%	1,658	1,852
Turnout	70%		70%		53%		62%		48%		83%		42%		69%	65%

Jefferson County Board Of Elections
Election Affiliation Statistics by County Legislative Districts

	REP	DE	IND	CON	LIB	Other	Non Aff	Enrolled	Registered							
County Legislative District #007																
Voters	1,070	42%	774	30%	80	3%	33	1%	27	1%	30	1%	488	19%	2,014	2,502
Voted	809	48%	537	32%	33	1%	24	1%	16	0%	15	0%	233	13%	1,434	1,667
Turnout	75%		69%		41%		72%		59%		50%		47%		71%	66%

County Legislative District #008																
Voters	1,123	44%	741	29%	81	3%	30	1%	28	1%	14	0%	491	19%	2,017	2,508
Voted	831	50%	489	29%	45	2%	17	1%	14	0%	5	0%	232	14%	1,401	1,633
Turnout	73%		65%		55%		56%		50%		35%		47%		69%	65%

County Legislative District #009																
Voters	2,594	52%	1,220	24%	127	2%	65	1%	38	0%	20	0%	832	16%	4,064	4,896
Voted	1,978	57%	888	25%	72	2%	44	1%	21	0%	13	0%	453	13%	3,016	3,469
Turnout	76%		72%		56%		67%		55%		65%		54%		74%	70%

County Legislative District #010																
Voters	2,096	52%	990	24%	101	2%	73	1%	30	0%	18	0%	670	16%	3,308	3,978
Voted	1,656	56%	730	24%	62	2%	55	1%	18	0%	11	0%	392	13%	2,532	2,924
Turnout	79%		73%		61%		75%		60%		61%		58%		76%	73%

County Legislative District #011																
Voters	2,056	52%	1,033	26%	101	2%	68	1%	37	0%	15	0%	595	15%	3,310	3,905
Voted	1,604	56%	775	27%	41	1%	54	1%	24	0%	11	0%	310	10%	2,509	2,819
Turnout	78%		75%		40%		79%		64%		73%		52%		75%	72%

County Legislative District #012																
Voters	1,848	48%	1,124	29%	100	2%	39	1%	27	0%	28	0%	627	16%	3,166	3,793
Voted	1,470	53%	826	29%	52	1%	33	1%	18	0%	14	0%	359	12%	2,413	2,772
Turnout	79%		73%		52%		84%		66%		50%		57%		76%	73%

	REP	DE	IND	CON	LIB	Other	Non Aff	Enrolled	Registered							
County Legislative District #013																
Voters	1,567	42%	1,152	31%	121	3%	64	1%	54	1%	31	0%	665	18%	2,989	3,654
Voted	1,214	48%	798	31%	65	2%	50	1%	26	1%	18	0%	338	13%	2,171	2,509
Turnout	77%		69%		53%		78%		48%		58%		50%		72%	68%
County Legislative District #014																
Voters	1,068	39%	907	33%	101	3%	49	1%	38	1%	21	0%	514	19%	2,184	2,698
Voted	771	43%	621	35%	65	3%	22	1%	21	1%	9	0%	248	14%	1,509	1,757
Turnout	72%		68%		64%		44%		55%		42%		48%		69%	65%
County Legislative District #015																
Voters	1,140	38%	1,081	36%	126	4%	50	1%	35	1%	33	1%	469	15%	2,465	2,934
Voted	827	43%	721	38%	62	3%	38	2%	15	0%	13	0%	206	10%	1,676	1,882
Turnout	72%		66%		49%		76%		42%		39%		43%		67%	64%
Voters	0	0%	1	100%	0	0%	0	0%	0	0%	0	0%	0	0%	1	1
Voted	0	0%	1	100%	0	0%	0	0%	0	0%	0	0%	0	0%	1	1
Turnout	0%		100%		0%		0%		0%		0%		0%		100%	100%

County Totals

Voters	24,986	47%	15,490	29%	1,522	2%	785	1%	535	1%	341	0%	9,260	17%	43,659	52,919
Voted	19,085	51%	11,072	30%	822	2%	545	1%	295	0%	200	0%	4,872	13%	32,019	36,891
Turnout	76%		71%		54%		69%		55%		58%		52%		73%	69%

Jefferson County Board Of Elections
County Wide Election Affiliation Statistics

Report Criteria: Voter Status of A - Active
Election GE00

	REP	DE	IND	CON	LIB	Other	Non Aff	Enrolled	Registered
Voters	24,986 47%	15,490 29%	1,522 2%	785 1%	535 1%	341 0%	9,260 17%	43,659	52,919
Voted	19,085 51%	11,072 30%	822 2%	545 1%	295 0%	200 0%	4,872 13%	32,019	36,891
Turnout	76%	71%	54%	69%	55%	58%	52%	73%	69%

IN THE BEGINNING

The start of a new century or is it?? Gloom and doom await us. Everyone talks about computers going ballistic and the world as we know it going haywire. We all waited with baited breath and lo and behold it is now December 2000 and nothing changed.

We started our year with the expectation of a Presidential Election. The media and candidates wouldn't allow us to forget it even if we wanted to. We knew it was going to be a very busy year but we hoped we were somewhat prepared.

We had asked for new furniture and new computers in our budget and we received all of the money necessary. After looking at the furniture in the catalogs and the prices, we opted to ask our county maintenance crew to build our work spaces. Our entire office was repainted and everyone received the nicest work areas anyone could ask for. We chose our own color scheme and although many people raised their eyebrows over the colors, when everything was finished they all agreed our office was very nice. The make over was completely finished by the first week of February and our new computers were coming in shortly.

The deputy commissioners' went to Albany for the Commissioners' Association Seminar and as usual they felt it was definitely worth attending. It is always an educational trip and it makes no difference whether it's a local, state, or federal election year. Every year the SBOE gives us knowledge to make our lives a little bit easier. Some of the best ideas come from other boards who have found solutions to many of the problems we find throughout an election year. When we returned, it was a rush to find election inspectors for the March Primary, publish the many notices that pertain to the election, send a number of absentee ballots, send our tape to NTS for the poll books, and meet the deadline for registration lists for the State Board of Elections. Registrations have increased and the registration clerks are finding it difficult to keep up. It was also time to call the local high schools and make appointments for our registration clerks to go to the schools and register students. The appointments are made for the end of March.

PRESIDENTIAL PRIMARY 2000

The Presidential Primary Election (March 7) was accomplished with very little problems. We are able to certify this election in record time. In fact we did it so well we had to do it a second time. Our certification was faxed to the State Board of Elections the day before the actual deadline for absentees to come in. OOPS! As it turned out it made no difference but we did send a second copy.

The last two weeks of March found the registration clerks going to a different high school almost every day of the week. They went to six schools in March and two in April registering 379 students. They also went to a nursing home to register people and assist with absentee applications.

COMPUTERS:

The deputy commissioners received their new computers in the spring. The computers the deputies previously used were designated to the registration clerks. Problems began with the

hookup of the new computers. We have had the NTS Data Services Election software since 1998 and have been very happy with this system. We have had very few problems, and those were small computer glitches that are taken care of immediately. Our computer problems began after our new computers were installed. It seemed to be more in the wiring than anything else because we noticed every time someone went into the hub where the wiring was, our Team 2000 software would disconnect and files would be corrupted. We kept going back and forth with DP. They would say it was Team 2000 software and NTS would say it was the hardware. In August we had an electrical storm that raised havoc with our telephones. After this storm our computers became very slow. DP kept saying it was because we were getting busier and the more people using the system would make it run slower. We had this system for the last two elections and were no busier then than now and this had never happened before. We kept complaining and they kept looking and all of a sudden one day the machines were back to the normal speed. When questioned, DP had no idea what they had done but if it was working that was great. The speed was back to normal but we were still getting disconnected and files were being corrupted, and there seemed to be no help. We went to our County Administrator and Chairman of the Board to let them know we were having problems. We were concerned about Election Day but felt we were doing everything we could.

SUMMERTIME

It's petition time again. This year isn't quite as bad as our "off" years. We received petitions from one county wide race, one legislator vacancy, several town vacancies, four village elections, and petitions from the Democrat, Independence, and Conservative parties. This added up to 207 designating petitions and 2 caucuses. In this office it is a bit hectic at petition time. We set up a petition book on Word Perfect before the petitions started coming in. When the petitions come into the office we fill in the party, office to be filled, candidates names and addresses, number of signatures, number of pages, number of volumes, time and date petition was delivered, and who brought it to the board office. We must then send a letter to the candidate to let him/her know we received their petition along with a notice of acceptance (if needed), a notice of declination (in case the candidate has changed their mind), finance forms, and the finance booklet. We then type up a label for each of the candidates. Once the last day to file is over and everything has been sent to the candidates, the book is used to type up the list for the printer for the ballots. This is a great deal of repetitive work but work that must be done. Often mistakes are made because of the amount of times candidates names must be typed and retyped for different reasons. We hope in the near future to have the Team 2000 software for petition and election night as it would make our life easier and there would be less chance of errors while using it. Maybe in our next year report, we can say we are using it.

We always have our election inspector school in August. We hope by having it close to the elections, the inspectors will be more apt to remember important information. This year we had six classes over a three day period. We trained 333 people and had several of our town clerks present. We were very pleased with our inspectors this year as we had very few problems.

In August we sent out 50,453 voter cards and 4,990 of those cards were returned. Because 2,135 voters had changed their addresses within the county, those addresses had to be

changed in this office. The remaining numbers were people who had moved out of county or state, or had a change of mailing address. All of this was changed on the computer so those voters would receive a card at their new address and have an opportunity to correct any mistakes before the printing of the poll books.

August was also the month to get the budget together. This year we asked for another Lektriever Filing System. We have one at this time that was built especially to hold our voter registration cards. This is truly a great machine as it takes up less room and you don't have to get on your hands and knees to retrieve files. This is now filled with registration cards and files that must be in a locked area. We need another Lektriever for our legal and regular files. This would free up space for our registration cards. We now have boxes of files stacked up to the ceiling which is great fun when you need to find something, and whatever you need always tends to be at the bottom of the pile. We also have boxes stacked in the small supply room. Many of our papers must be held for two to four years and these must be kept in our office. We have a Records Management Department in Jefferson County, but our board adopted the schedule for county boards of elections records and appointed a records management coordinator within our office in 1993. We have utilized the county records room to store all of those records that must be kept forever. We usually do not send those records to record keeping until after a four year period because our election cycle is four years and during that time we often have to look at certain paperwork from former years. The rest of the budget was routine for the local election year. Our Contractual budget which includes Office Expenses, Telephone, Postage, Printing, Computer Software, Travel, Advertising, and Operating Support is \$59,606; Personnel Service budget which includes salaries for Full Time Personnel, Temporary personnel, and Overtime is \$119,246 and Benefits which includes State Retirement, Health Benefits, Social Security, and Workers Comp is \$27,456 bringing our total budget to \$211,512.

SEPTEMBER PRIMARY

Everything is moving right along but we seem to be having a great deal of problems with our computers. They are running so slowly that it is taking twice as long to input data on our software system. The PC technicians are trying to find the problem, but are unsuccessful. They feel it might be our software because they found several corrupt files. The technicians from Team 2000 went into the files and fixed them but felt the problem was with the county hardware. In the meantime our personnel are working frantically to be prepared for the primary. Every day our computers would disconnect and we would have to reboot our machines when that happened. Eventually we would find more and more corrupt files. We managed to limp through the primary.

We changed the way we did our primary night reporting. A programmer from the Data Processing offices set up a new program on the PC. We used to input the information that was telephoned in and print it out on paper and then take the paper to the reporting room. We had large boards in the reporting room and every time a new printout would be brought in, we would manually update the totals on the boards. This was time consuming and the press was not happy with it. This year we put computers in the reporting room and as soon as the numbers were input on the computer in the data processing room they immediately appeared on computers in the reporting room. Every one was very excited with the quick results. Our programmer told us we

had the old system to fall back on in case anything went wrong. Nothing went wrong, and we had a very early Primary Election return.

COMING ON TO THE "BIG" DAY

This was the Presidential Election year and as everyone knows that means two local registration days. This has got to be the most archaic, expensive, and useless law on the state law list. We received 52 new registrations, 3 name changes, 14 residence changes, 6 duplicates, and 5 others totaling 80 registrations. There was one poll open in each of the 22 townships and one poll open in the City of Watertown for each of the two registration days. There were 92 registration clerks working for both days which comes to 10 ½ hours. The average pay per hour for these 92 people is \$7.00. This averages about \$8.05 per registration. This does not include the time spent packing supplies, picking up supplies, and bringing them back. This seems rather ridiculous when a person can pick up a registration form at any post office, library, federal, state, or county building. They can also get a form off of the computer, call the Board of Elections and have one mailed to them, and the list goes on and on. Hopefully this law will be changed before the next presidential election.

Our office was open on two Saturdays before elections and four evenings before elections. This was well advertised by the media and many people came into the office to get absentee applications.

ELECTION DAY 2000

We made it through the year working diligently for this "our big day" or as some people think "the only day we work in this office". We arrived at 5:00 a.m. Tuesday morning. We had four extra people because of the many telephone calls. Our city custodians come into our office at that time also. We are ready! It started very quietly. Everyone showed up to work and they seemed to have no problems opening machines. Maybe it was because our county machine custodian was at our training session and he went step by step in the opening and closing of the machines during the class. At the end of the class he stayed and let the inspectors come up and have a hands-on class. This worked well. We had approximately five machine problems but most of the districts that had a problem had two machines in their district. This worked out well as they didn't have to use Emergency paper ballots. We had a large amount of calls, but they were inspectors calling to see if someone was registered and where they were registered. We had a judge in the building for anyone wanting a court order. There were quite a few in the morning but no big problem. Our morning went quite smoothly and we were breathing sighs of relief because that's when we usually have all of our problems. Our early preparations paid off or so we thought.

Afternoon came and everyone got their lunch breaks. We started getting very busy with court orders. The judge came into our office and set up a desk just for the court orders. We had a line out our office door and down the hall. We were inputting each of the court orders so they'd have numbers and they would know where they had to go to vote. Then the worst thing that can happen on a busy election day happened. Our computers crashed. We called NTS and our county technicians. The technicians from NTS went into the system and found our files were corrupt. We would have to take the back up tape from the night before and put it back into the

system. NTS would be able to fix it from there. We were devastated. We had made alphabetical printouts of all of our active voters in book form so we could look up those voters that were registered. We didn't have an inactive file, a placement file, and we couldn't input the new voters we were getting through court orders. We slowed down to a crawl on the court orders because we had to get the old maps out and look up the towns/districts to tell them where they would be voting. We also had to send the court order without a registration number on it which caused quite a few telephone calls from inspectors wanting to know what to do. The NTS technicians built us a file on one of our computers from the tape we had sent them for the poll books so we finally had one computer we could do look up and more important we could place the court order voters in the correct town and district. We could input their address on the computer and it would automatically tell us where that person would vote. This took about an hour to build. The rest of the computers were down about four hours. This was truly a nightmare for this office. We can manage election problems because we have been trained for them. It's very difficult to be almost certain a major problem is coming that has nothing to do with the election itself but will have such an effect on the ability for this office to perform and have no understanding of how to stop it. We did 260 court orders and approximately 200 of them were done on election day in the afternoon and evening. This would have been hectic enough without the computer problem. We managed to stay on top of things to the extent that everyone who was eligible was able to vote and that was our main concern.

Nothing could get worse or could it? We went forward and finally the polls were closed. We went down to the data processing room where the work takes place. Our election night programmer was there ready to go. At 9:00 p.m. someone in the information room said there was a problem with the computers. Our computer technicians were there and they rebooted them and the problem seemed to be over. The telephone calls started coming in within 20 minutes and the numbers were input on the PC's in the data processing room and they were showing up on the computers in the information room immediately. It was going great. We had three districts left to input when everything went crashing down. The programmer tried to rebuild the file, but he said it was impossible because the files were corrupt. We'll go to plan 2 - OOPS, plan 2 isn't there. Everything went so well on Primary night that our county programmer didn't feel it was necessary to have a second plan of action, and we never thought to double check to be sure it was in place. We went out and explained to the people (and there were a lot of them) that we had a problem and we would have to start over and count everything by hand. All of a sudden there were cameras and news reporters in the data processing room wanting interviews on what happened. We tried to explain the best we could, but in fact we didn't know. The only thing we were sure of was this computer crash was identical to the way our election system crashed and they were not the same system. When we were in our software system, the computers would always disconnect and we couldn't get back into it until we rebooted. After this happened, we would crash and have corrupt files. The same thing happened on the program built by data processing for our election night system. Again this tells this office the problem is not in the election software but somewhere in the wiring or server. All of this took place a little after 10:00 p.m.. The personnel from Informational Services and our own personnel immediately began the count using hand calculators. We were finished at midnight and gave the end results to the media (at least those that were left). The next day the telephones were ringing. Everyone wanted

answers and we didn't have them. We in this office are not computer experts and we do not feel we should have to be. The Watertown Daily Times had an editorial the following morning saying our office was incompetent and something needed to be done. When that hit the stands our other media immediately called and wanted interviews. It was truly a great feeling because the television stations and the radio stations were very upset with the newspaper for what they said. They wanted interviews so they could let the voters know that what happened was not our fault and it did not effect the election in any way. We were very thankful to them for helping us out. Again we survived but it isn't something we want to go through again. The next couple of days were spent cleaning up and sorting the paperwork from the election bags. We then started the absentee ballot count and the recanvas of the election. That was done and the results were sent to everyone who had to have it or who wanted it.

It was now time to get back to the computer problem. A letter was sent to the Chairman of the Board and the Administrator asking for a meeting to discuss the problems we were having. A meeting was set up with our Chairman of the Board, County Administrator, Deputy Administrator, Budget Officer, two legislators, Informational Services Department Head, and a representative from the Board of Elections. The suggestion from the Board of Elections is our own server and the election night program software that is compatible with our election software. A suggestion was made by the Informational Services Department Head to send a questionnaire to all counties that have the NTS system to see if they are having the same problems. It was agreed that he would send the questionnaire to the Data Processing Departments and I would send the same to the Board of Elections. In this way we can get both sides of the issue. Another meeting is pending when the results from the other counties come in.

THE END OF ANOTHER REMARKABLE YEAR

The year is at an end. We are all thankful to see another presidential election at a close finally. Our hearts went out to those workers in Florida for all of their problems. They need equal representation of their major parties in each of their county offices. This stops many problems before they begin. The only good thing that can come of the many problems in this election is capturing the eyes and ears of our state lawmakers. Maybe now they will listen to our many problems and concerns that we have been trying to tell them for many years.

**2000 ANNUAL STATISTICAL INFORMATION REPORT
PAGE 1**

COUNTY _____ DATE _____

FINANCIAL SUMMARY

BUDGET

TOTAL BUDGET FOR 2000	\$ 211,512
AMOUNT 2000 BUDGET INCREASE OR (DECREASE) FROM LAST YEAR'S BUDGET	\$ + 8,548
AMOUNT APPROPRIATED FOR 2000	
SALARIES	\$ 146,702
PRINTING	\$ 30,000
SUPPLIES	\$ 29,310
TRAINING	\$ 5,500

**STAFF SUMMARY
COMMISSIONERS**

DEMOCRATIC COMMISSIONER SALARY	\$ 2,560
REPUBLICAN COMMISSIONER SALARY	\$ 2,500
2 OR 4 YEAR TERM	2
FULL OR PART TIME	part

DEPUTY COMMISSIONERS

DEMOCRATIC DEPUTY SALARY	\$ 30,803
REPUBLICAN DEPUTY SALARY	\$ 30,803
FULL OR PART TIME	Full

EMPLOYEES (EXCLUDE COMMISSIONERS & DEPUTIES)

NUMBER OF FULL TIME BOARD EMPLOYEES	2
NUMBER OF PART TIME BOARD EMPLOYEES	2
NUMBER OF TEMPORARY OR SEASONAL BOARD EMPLOYEES	20-25

INSPECTOR INFORMATION SUMMARY

TRAINING AND SALARY

NUMBER OF INSPECTORS APPOINTED	339
NUMBER OF INSPECTORS ATTENDING CLASS	276
NUMBER OF INSPECTORS WHO TOOK EXAM	334
NUMBER OF INSPECTORS WHO FAILED EXAM	0
NUMBER OF ALTERNATE INSPECTORS APPOINTED AND TRAINED	220 appt. 57 trained
NUMBER OF CLASSES GIVEN	6
CLASS SIZE	app. 50
AVERAGE LENGTH OF CLASS SESSION	2-3 hrs.
INSPECTOR SALARY RANGE (IF YOU HAVE A COUNTY-WIDE SALARY ENTER THAT AMOUNT IN BOTH THE LOW AND HIGH BOX)	LOW HIGH \$16,001 \$19,001
RATE OF PAY FOR INSPECTORS ATTENDING TRAINING SESSION	\$ Each town different
NUMBER OF PEOPLE WHO CHECK MAIL REG OR CALLED BECAUSE OF MAIL CHECK CARD ASKING TO BE PUT ON LIST AS INSPECTOR	ALL pay milage

POLLING SITE SUMMARY

NUMBER OF POLLING SITES IN COUNTY	61
NUMBER OF POLLING SITES ACCESSIBLE TO HANDICAPPED	61
NUMBER OF ELECTION DISTRICTS IN COUNTY	83

VOTING EQUIPMENT SUMMARY

NUMBER OF VOTING MACHINES	101
WHO OWNS VOTING MACHINES	Municipality
WHO MAINTAINS VOTING MACHINES	Municipality
NUMBER OF VOTING MACHINES ACCESSIBLE TO HANDICAPPED	at least 1 in each town

ELECTION RESULTS

ELECTION NIGHT QUICK RETURNS DONE	Both	<input type="checkbox"/> COMPUTER <input type="checkbox"/> MANUALLY
RECANVASED AND CERTIFIED RESULTS DONE		<input type="checkbox"/> COMPUTER <input checked="" type="checkbox"/> MANUALLY

**PETITIONS
DESIGNATING PETITIONS**

NUMBER RECEIVED	207
NUMBER CHALLENGED	0
NUMBER OF SPECS FILED	0
NUMBER INVALIDATED BY BOARD	0
NUMBER OF COURT CASES	0
NUMBER OF CASES UPHOLDING BOARD POSITION	0
NUMBER OF CASES REVERSING BOARD POSITION	0

INDEPENDENT PETITIONS

NUMBER RECEIVED	3
NUMBER CHALLENGED	0
NUMBER OF SPECS FILED	0
NUMBER INVALIDATED BY BOARD	0
NUMBER OF COURT CASES	0
NUMBER OF CASES UPHOLDING BOARD POSITION	0
NUMBER OF CASES REVERSING BOARD POSITION	0

CAUCUS CERTIFICATES

NUMBER RECEIVED	7
NUMBER CHALLENGED	0
NUMBER OF SPECS FILED	0
NUMBER INVALIDATED BY BOARD	0
NUMBER OF COURT CASES	0
NUMBER OF CASES UPHOLDING BOARD POSITION	0
NUMBER OF CASES REVERSING BOARD POSITION	0

CAMPAIGN FINANCE SUMMARY

NUMBER OF COUNTY COMMITTEE FILERS	4
NUMBER OF CANDIDATE FILERS	4
NUMBER OF PAC FILERS	6
TOTAL NUMBER OF FILINGS RECEIVED	50
NUMBER OF FIVE DAY LETTERS SENT	0
NUMBER OF CURRENT DELINQUENT FILINGS	0
NUMBER REFERRED TO COUNTY ATTORNEY OR DA	0

NURSING HOMES ABSENTEE BALLOT PROGRAM

WE PERSONALLY VISIT NURSING HOMES TO DISTRIBUTE ABSENTEE BALLOTS	YES <input type="checkbox"/>	NO <input checked="" type="checkbox"/>
NUMBER OF HOMES VISITED FOR MARCH PRIMARY	0	
NUMBER OF HOMES VISITED FOR SEPTEMBER PRIMARY	1	
NUMBER OF HOMES VISITED FOR GENERAL	0	
NUMBER OF BALLOTS PROCESSED - PRIMARY AND GENERAL TOGETHER	0	

GENERAL INFORMATION

NUMBER OF MILITARY VOTERS ON FILE IN YOUR COUNTY	350	
NUMBER OF PERM/DISABLED VOTERS ON FILE IN YOUR COUNTY	572	
NUMBER OF SPECIAL FEDERAL VOTERS ON FILE IN YOUR COUNTY	60	
TOTAL NUMBER OF INACTIVE VOTERS ON FILE AS OF DECEMBER 31, 2000	914	
DO YOU HAVE A FAX MACHINE IN YOUR OFFICE?	YES <input checked="" type="checkbox"/>	NO <input type="checkbox"/>
DO YOU RUN ANY VILLAGE ELECTIONS?	YES <input checked="" type="checkbox"/>	NO <input type="checkbox"/>
DO YOU HAVE A WEB SITE (IF SO, PLEASE PROVIDE WEB PAGE ADDRESS BELOW)	YES <input checked="" type="checkbox"/>	NO <input type="checkbox"/>
www.sunyjefferson.edu/JC		

ABSENTEE AND AFFIDAVIT BALLOT SUMMARY	
MARCH PRESIDENTIAL PRIMARY ABSENTEES	
NUMBER OF APPLICATIONS RECEIVED	684
NUMBER OF BALLOTS MAILED	683
NUMBER OF BALLOTS RETURNED	461
NUMBER INVALIDATED (NOT SIGNED, DATED AFTER ELECTION, ETC.)	33
NUMBER OF VOTERS WHO VOTED IN PERSON AFTER VOTING ABSENTEE	1
MARCH PRESIDENTIAL PRIMARY AFFIDAVITS	
NUMBER OF AFFIDAVITS RECEIVED	48
NUMBER OF AFFIDAVITS COUNTED FOR TRANSFERS/MOVERS	24
NUMBER OF AFFIDAVITS COUNTED FOR OTHER REASONS	4
REASONS FOR REJECTION	
TOTAL PRIMARY AFFIDAVITS REJECTED	20
NUMBER NOT SIGNED	11
NUMBER NOT IN DISTRICT	11
NUMBER FILLED OUT INCORRECTLY	11
NOT PROPERLY ENROLLED	18
MISCELLANEOUS	2
MARCH PRESIDENTIAL PRIMARY COURT ORDERS	
TOTAL COURT ORDERS PROCESSED	3
SEPTEMBER PRIMARY ABSENTEES	
NUMBER OF APPLICATIONS RECEIVED	356
NUMBER OF BALLOTS MAILED	353
NUMBER OF BALLOTS RETURNED	255
NUMBER INVALIDATED (NOT SIGNED, DATED AFTER ELECTION, ETC.)	18
NUMBER OF VOTERS WHO VOTED IN PERSON AFTER VOTING ABSENTEE	1
SEPTEMBER PRIMARY AFFIDAVITS	
NUMBER OF AFFIDAVITS RECEIVED	59
NUMBER OF AFFIDAVITS COUNTED FOR TRANSFERS/MOVERS	36
NUMBER OF AFFIDAVITS COUNTED FOR OTHER REASONS	3
REASONS FOR REJECTION	
TOTAL PRIMARY AFFIDAVITS REJECTED	20
NUMBER NOT SIGNED	11
NUMBER NOT IN DISTRICT	11
NUMBER FILLED OUT INCORRECTLY	19
NOT PROPERLY ENROLLED	1
MISCELLANEOUS	
SEPTEMBER PRIMARY COURT ORDERS	
TOTAL COURT ORDERS PROCESSED	0
GENERAL ABSENTEES	
NUMBER OF APPLICATIONS RECEIVED	3123
NUMBER OF BALLOTS MAILED	3120
NUMBER OF BALLOTS RETURNED	2544
NUMBER INVALIDATED (NOT SIGNED, DATED AFTER ELECTION, ETC.)	168
NUMBER OF VOTERS WHO VOTED IN PERSON AFTER VOTING ABSENTEE	8
GENERAL AFFIDAVITS	
NUMBER OF AFFIDAVITS RECEIVED	414
NUMBER OF AFFIDAVITS COUNTED FOR TRANSFERS/MOVERS	141
NUMBER OF AFFIDAVITS COUNTED FOR OTHER REASONS	194
REASONS FOR REJECTION	
TOTAL GENERAL AFFIDAVITS REJECTED	79
NUMBER NOT SIGNED	1
NUMBER NOT IN DISTRICT	78
NUMBER FILLED OUT INCORRECTLY	1
MISCELLANEOUS	1
GENERAL COURT ORDERS	
TOTAL COURT ORDERS PROCESSED	260

REGISTRATION AND ENROLLMENT SUMMARY	
REGISTRATION	
TOTAL NUMBER OF CENTRAL (IN OFFICE) REGISTRATION FORMS PROCESSED	464
TOTAL NUMBER OF MAIL FORMS PROCESSED	
LOCAL REGISTRATION INFORMATION HAS ALREADY BEEN SENT TO US	XXXXXXXXXXXXXXXXXXXXXX
FORMS DISTRIBUTION	
TOTAL NUMBER OF MAIL FORMS USED	14000 app.
NUMBER OF FORMS ISSUED TO GROUPS	4500
NUMBER OF FORMS USED IN YOUR OWN OUTREACH PROGRAMS (BANKS, POST OFFICES, TOWN/CITY HALLS, ETC)	
NUMBER OF FORMS PROCESSED FROM TAX PACKETS	5000
REGISTRATION SUMMARY FROM ALL SOURCES	
NUMBER OF NEW REGISTRANTS PROCESSED IN 2000	4981
NUMBER OF MOVERS WITHIN YOUR COUNTY PROCESSED IN 2000	4850
TOTAL NUMBER OF ENROLLMENT CHANGES	938
TOTAL NUMBER OF NAME CHANGES	682
TOTAL NUMBER OF DUPLICATES	1005
TOTAL NUMBER OF OTHERS	21451
CONFIRMATION NOTICES	
TOTAL NUMBER OF CONFIRMATION NOTICES SENT IN 2000	4996
NUMBER OF PERSONS REREGISTERED AS A RESULT OF YOUR CONFIRMATION NOTICE	50 app.
CANCELLATIONS	
TOTAL NUMBER OF REGISTRATIONS CANCELLED	11648
NUMBER OF CANCEL NOTICES SENT TO OTHER COUNTIES	1100 app.
NUMBER OF CANCEL NOTICES SENT TO SBOE FOR OTHER STATES	500 app.
NUMBER OF PERSONS CANCELLED BY RETURNING POSTAGE - PAID CARD IN CONFIRMATION NOTICE	25 app.

JEFFERSON COUNTY

1. POSTAL PROGRAM:

Our current method of monitoring program supplies at postal sites is through the post master. We send 50 registration forms to each post office in the county with a letter asking them to please inform us when the supply becomes low. When a voter calls for a form we tell them we can either mail them one or if they happen to be going to their post office they can pick one up there. If the forms aren't available when the customer wants them, they usually complain to the postmaster. This has helped our cause. The postmasters now keep track of the forms and call us when they become low. If we don't hear from a post office every few months we will call and ask them if they have enough forms. We are finding we are having to do this less and less each year.

2. SCHOOL PROGRAM:

Every year in February we call each school and set a date and time our registration clerks can come and register students. We have done this for so long if we get busy and forget to call in February the school will usually call us by March. We have two schools in our county that prefer doing their own registrations and we send forms to these schools with instructions.

3. MEDIA

We work very closely with our media. We have two television stations, several radio stations, several local weekly papers, and one county wide newspaper. We always make sure we are in contact with them through out the year. We keep them informed as much as we possibly can. We let them know we feel they are our go-between from elections to the voter. In turn they almost always are there for us when we need them. This was proven this year when we had so many problems during election night. Although one of the media were quite harsh in their criticisms, the others were all there to help us.

4. PRINT RESOURCES:

We do use the many brochures and posters we have received from the NYS Board of Elections. We always use them at the schools when our clerks go to register students. We also hand them out to those people and organizations doing registration drives. We also give anyone who comes into our office or calls our office looking for information the different brochures.

JEFFERSON COUNT

ACTION PLAN FOR YEAR 2001

Our intent is to keep going in the direction we have been going. We feel very confident in what we are doing. We always make the voter our number one concern and we use all of our programs with that in mind.
